



BEVERAGE PACKAGING



OUR COMPANY

AAPL Solutions has been specializing in the Pharmaceutical, Food, and Beverage Industries Since 1983.

For over four decades, we have been at the forefront of primary packaging solutions, dedicated to serving the diverse needs of the pharmaceutical, food, and beverage sectors. Our commitment to excellence has established us as a trusted partner in the industry.

Global Reach, Local Understanding

With a robust presence across North America, Latin America, Africa, the Middle East and Southeast Asia, we proudly serve clients in **more than 55 countries**. Our extensive experience enables us to navigate the unique challenges and requirements of each market, ensuring tailored solutions that meet regulatory standards and consumer demands.

Quality: The Cornerstone of Our Success

At our core, we believe that quality is not just a goal—it is the foundation of our business philosophy. We are committed to delivering superior products and services that exceed expectations. Our quality-conscious approach drives innovation and continuous improvement, ensuring that our clients receive the best packaging solutions available.

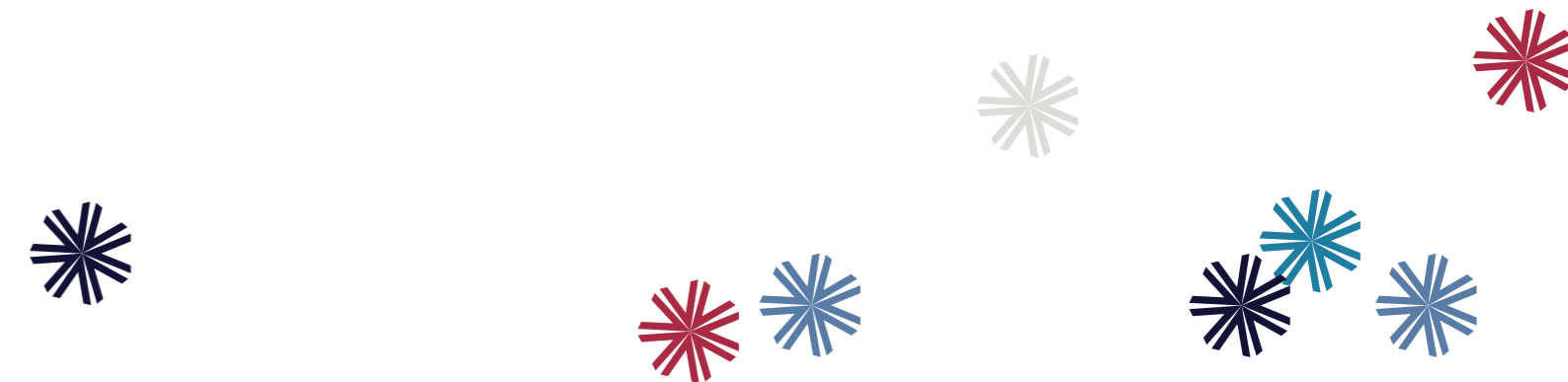
Join us as we continue to set the standard in primary packaging, where quality meets reliability.



AAPL Solutions Pvt. Ltd.
27AAACA3629C1Z5

2nd Flr, Mahatma Gandhi Memorial Building,
7 Netaji Subhash Road, Next to Smt. K.G. Mittal Hospital,
Charni Road (West), Mumbai - 400002

www.aaplsolutions.com | talk@aaplsolutions.com
+91 22 2282 0721 | +91 22 2282 0722



OUR PRODUCT RANGE

Our beverages product range exemplifies our dedication to quality and innovation. We offer a comprehensive selection tailored to meet diverse market needs, including :

ROPP CLOSURES

- * Own Manufacturing
- * Wide variety of sizes
- * Several Printing Options
 - Lithography
 - Dry Offset Printing
 - Screen Printing
- * Embossing
- * Chamfering
- * Wide variety of liners
- * Non-refillable Pourer

GLASS BOTTLES

- * Amongst leading exporter from India
- * Several shapes available
- * Various sizes
- * Customised bottles



OUR PRODUCTION CAPACITY

Our facility boasts a total production capacity of 150 million units monthly, ensuring we can meet high-volume demands efficiently. Currently, we have a spare capacity of 50 million units each month, allowing us to respond quickly to unexpected increases in orders. This flexibility positions us as a reliable partner for businesses looking for scalable manufacturing solutions.

 **9 LINES**
For Manufacturing several sizes of ROPP Closures

 **11 DOP & 8 SCREEN**
Printing Lines to minimise backlog and ensure beautiful looking closures

 **150 MILLION MONTHLY**
Total Production Capacity

 **50 MILLION MONTHLY**
Current spare capacity of production



OUR DEVELOPMENT TIMEFRAME



ANALYZE
Week 1 is spent in
analyzing your current
closures.



DEVELOP
Week 2 is spent in
developing the artwork for
approval.



BUILD
Week 4 we present
samples for approval



PRODUCE
Week 8 we produce the
commercial order.

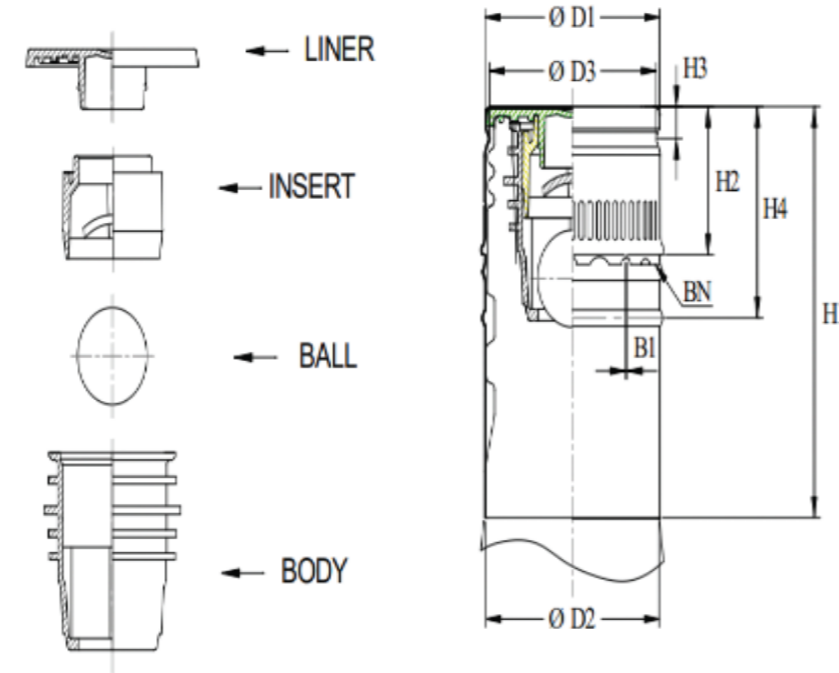
OUR INNOVATIVE MINDSET



We are committed to continuous **experimentation and innovation**, investing in cutting-edge technologies to design and produce the best closures on the market. This dedication ensures our customers enjoy a wide range of choices that exceed their expectations, positioning us as industry leaders in quality and innovation



We are proud to be the **only factory in India** with in-house manufacturing and fitting capabilities for non-refillable pourers. This unique advantage allows us to ensure the highest quality and reliability, offering customized solutions that meet our clients' specific needs. Our commitment to innovation sets us apart, providing a competitive edge in the industry.



OUR PACKAGING

- ✓ VIRGIN CRAFT BOXES
- ✓ SHRINK WRAPPING (if required)
- ✓ STACKING OF CAPS
- ✓ FUMIGATED PALLETS
- ✓ AUTOMATED CONVEYER FOR LOADING



OUR IP CONFIDENTIALITY

- * **Expertise in Packaging and Materials Innovation:** Our team of specialists is dedicated to supporting clients with packaging and materials innovation. We conduct thorough hygiene surveys and audits to ensure compliance with industry standards, while also identifying opportunities to improve operational efficiency. Additionally, we provide training sessions for your personnel, equipping them with the skills necessary to optimize packaging processes and maintain high quality standards.
- * **Client Confidentiality in Designs and Artwork:** We prioritize client confidentiality by restricting access to designs, artworks, and logos to authorized personnel only. This ensures that sensitive information is protected, maintaining the integrity of our clients' intellectual property. Our robust security measures foster a trusted environment where clients can confidently share their creative concepts.
- * **Protection of Trade Secrets:** We understand the significance of protecting trade secrets and proprietary information. Our strict protocols ensure that all sensitive information remains discreet and secure, allowing clients to innovate without concern. This commitment to confidentiality not only strengthens our relationships but also enhances our reputation as a trusted industry partner.



TRADE SECRETS
COPYRIGHTS
PATENTS TRADEMARKS
INDUSTRIAL DESIGN

OUR WARRANTIES & CLAIMS

- * **3 YEAR SHELF-LIFE**

ROPP Closures

- * **AQL LEVELS**

- Critical - 0.25%
- Major - 1.50%
- Minor - 2.50%

- * **15 DAYS**

Claim for any visual defects.

- * **45 DAYS**

Claim for any hidden defects.

- * **FREE REPLACEMENT**

Incase of any rejection due to our fault.



OUR TRAINING & DEVELOPMENT

At our company, we prioritize the continuous development of our employees by maintaining a tailored training schedule for each department. This structured approach ensures that every team member receives essential training at regular intervals, enhancing their skills and keeping them updated on industry advancements.

Our training programs cover a range of topics, from technical skills to leadership development, fostering a culture of learning and collaboration. By regularly reviewing and updating these schedules, we remain responsive to the evolving demands of our industry. This commitment not only boosts employee morale but also strengthens our organization as a whole, driving us toward our business goals.



OUR OFFICE LOCATIONS

**MUMBAI, INDIA**


2nd Floor, Mahatma Gandhi
Memorial Building, 7, Next to KG
Mittal Hospital, Charni Road,
Mumbai, Maharashtra - 400002

**JAKARTA, INDONESIA**

Wisma 46 Kota BNI, Lantai 48 jl. Jend
Sudhirman Kav 01 Jakarta Pusat
Tel: + 62 21 5748883
Fax: + 62 21 5748888

**CALIFORNIA, USA**

101 Polk Street # 1206, San
Francisco, California, 94102, USA
Tel: +1 765 5856561

**LAGOS, NIGERIA**

11 CIPM CBD Alausa, Ikeja,
Alausa, Nigeria
Tel: +254 906127855

THANK YOU!

We look forward to the opportunity of working with you!



ARJUN KHERA
+5491128677298
+919999559544
arjun@aaplsolutions.com



AAPL Solutions Pvt. Ltd.
27AAACA3629C1Z5

2nd Flr, Mahatma Gandhi Memorial Building,
7 Netaji Subhash Road, Next to Smt. K.G. Mittal Hospital,
Charni Road (West), Mumbai - 400002

www.aaplsolutions.com | talk@aaplsolutions.com
+91 22 2282 0721 | +91 22 2282 0722

